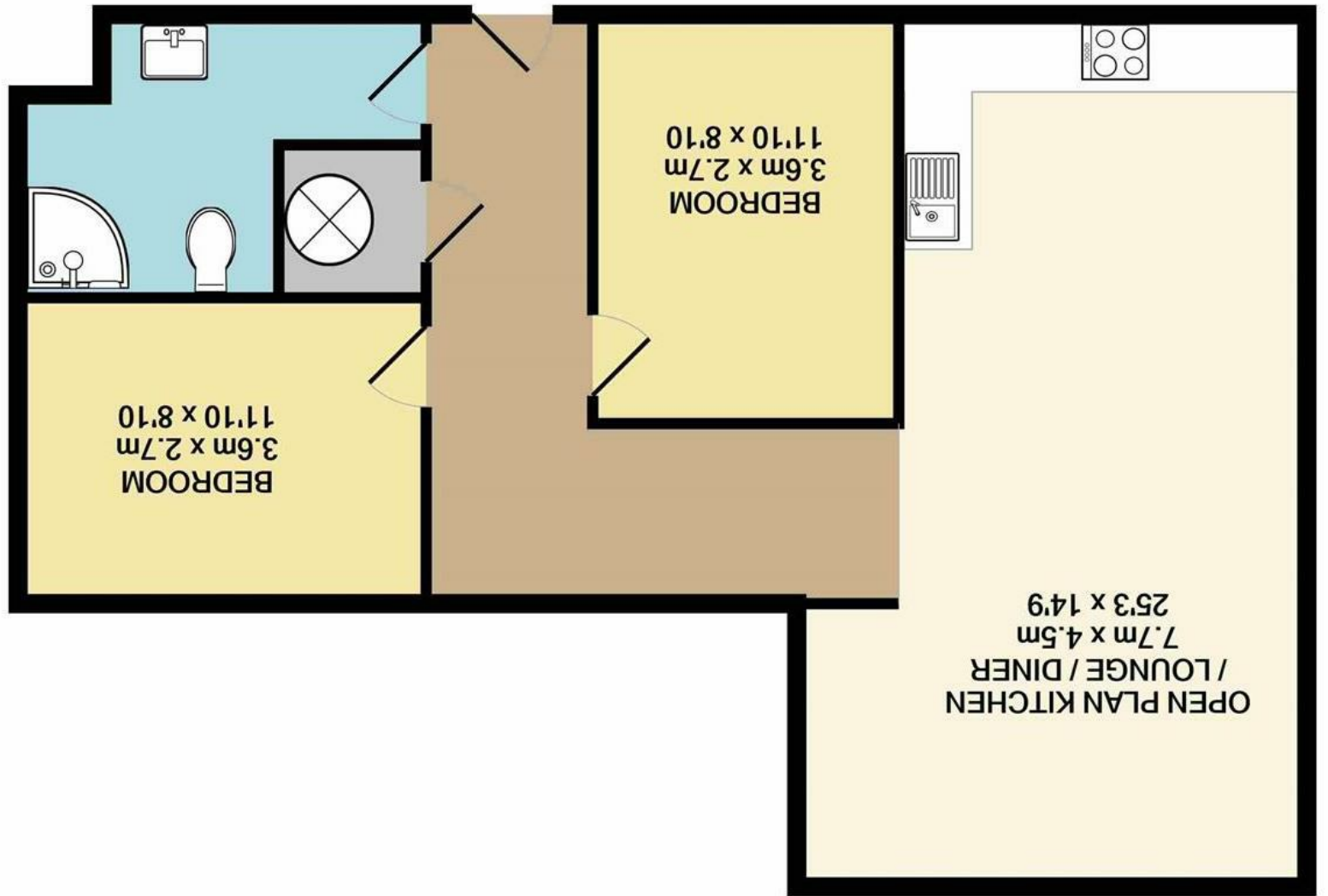


Whilst every attempt has been made to ensure the accuracy of the floor plan contained here, measurements of doors, windows, rooms and any other items are approximate and no responsibility is taken for any error, omission, or mis-statement. This plan is for illustrative purposes only and should be used as such by any prospective purchaser. The services, systems and appliances shown have not been tested and no guarantee as to their operability or efficiency can be given

Made with Metropix ©2021

TOTAL APPROX. FLOOR AREA 69.8 SQ.M. (752 SQ.FT.)



Disclaimer – In accordance with the Property Misdescriptions Act, the company gives notice that all descriptions, references to condition, necessary permissions for use and other details are given in good faith and believed to be correct, but any intending lessees do not rely on them as statements of fact, but must satisfy themselves by inspection or other means, as to their accuracy.

England & Wales		EU Directive 2002/91/EC	
Very energy efficient - lower running costs	A (92 plus)	61	61
	B (81-91)		
	C (69-80)		
	D (55-68)		
	E (39-54)		
	F (21-38)		
Not energy efficient - higher running costs	G (1-20)		



Norwich City Centre | NR1  
 GuideGuide Price £230,000 *leasehold*



abbotFox presents this superb two bedroom apartment (the largest there is) located on the third floor with a secure underground car parking space.

Exceptionally well cared for and maintained, the apartment is as good as new and offers generous proportions throughout. Accommodation comprises; reception hall, stylish shower room, two double bedrooms and an impressive open plan living space which includes a large eat in kitchen equipped with integral appliances.

Sentinel House is a unique city centre development within the iconic, former Norwich Union headquarters. A residents' lounge provides the perfect place to read a book or meet friends and a fully equipped gym is available for residents 24/7. In addition to this there is a terrific concierge service.

This particular apartment enjoys stunning views of Norwich Castle and beyond. There are several lifts to all floors as well as staircases. The building is safe and secure with fob entry and monitored audio CCTV throughout.

Guide Price £230,000-£240,000

